

MULTI SCREEN®

MS 3200



March, 30th 2026

up to 60 m³/h

screening capacity



9,5 t
Maximum weight



Double trommel
technology



Replaceable
wire screen



Full mobility
at 80 km/h



Tested
safety system



Electrical drive
optional external
power generator

The compact trommel screening machine for professional use

Trommel length
3,000 / 3,900 mm

Hopper
Volume 2.3 m³
Loading width 3,050 mm

Weight
max. 9,500 kg

Trowing device
Towing eye Ø 40/50 mm

Trommel diameter
1,300 mm

Drive
electric (32 A), optional
power generator

Transport measurements
(LxWxH) 9,200 x 2,450 x
3,600 mm (Standard)



Nobelstr. 11
03238 Massen-Niederlausitz

+49 3531 7906-0
info@zemmler.de

www.zemmler.de/en



Technical Description

- ✓ **Base frame**
 - Longitudinal beam:** hollow profile, height 180 mm
 - Chassis:** 2 x 5,5 t air suspension
 - Product:** BPW
 - Tires:** 4 x 235/75 R17.5
 - Rim:** 4 x 6,75 x 17.5
 - Brake:** trommel air break EBS-control unit (ABS)
- ✓ **Hopper**
 - Volume:** approx. 2.3 m³
 - Loading height:** 2,450 mm
 - Loading width:** 3,000 mm (3,400 mm with funnel attachment; + 340 mm funnel height)
- ✓ **Feeding belt**
 - Belt width:** 800 mm
 - Belt length:** 2,770 mm
 - Belt type:** plain belt (profile belt: optional)
 - Speed:** adjustable
- ✓ **Double trommel**
 - Inner screening surface:** 8.1 m²
 - Outer screening surface:** 10.0 m²
 - Trommel diameter:** 1,000 mm (inner)
 - Trommel diameter:** 1,3000 mm (outer)
 - Length:** 3,000/ 3,900 mm
 - Trommel drive:** direct over chain and chain wheel
- ✓ **Mesh sizes**
 - Inner:** 75 x 170 mm (standard)
 - Outer:** exchangeable wire screens 2 - 80 mm (optional)
- ✓ **Cleaning brush**
 - Diameter:** 350 mm, with own drive
- ✓ **Trommel belt (fine fraction)**
 - Belt width:** 800 mm
 - Belt length:** 4,500 mm
- ✓ **3 fractions**
 - Fine fraction:** 2 - 80 mm, on demand
 - Middle fraction:** 2 to 80 mm or Standard 75 x 170 mm
 - Coarse fraction:** Via attachment ring (standard) or coarse fraction belt (optional), depending on the mesh size of the middle fraction, standard > 170 mm
- ✓ **Power**
 - electric drive** (32A)
 - approx. 12,7 kW / 15,9 kVA (standard)
 - optional** diesel-power-generator 17 kVA (not included in the basic price)
- ✓ **Hitch**
 - drawbar eye** Ø 40 mm or Ø 50 mm
 - Drawbar** individually configurable, standard height 743-1057 mm
- ✓ **Screening capacity**
 - up to 60 m³/h**, depending on the material properties
- ✓ **Weight**
 - Approx. 9,500 kg
- ✓ **Colour / Coatings**
 - Polyurethane one-coat topcoat
 - Silo, Engine cover and side covers:** RAL 6001 green
 - Hopper, chassis, screening trommel:** RAL 7022 umbra grey
 - Conveyor belt frame:** hot galvanized

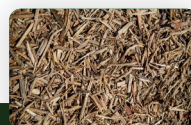
Processable materials

Coal
Excavated soil
Waste
Clinker
Stones

Rubbish
Glass
Plaster
Building rubble
Green waste

Wood
Compost
Shredded wood waste

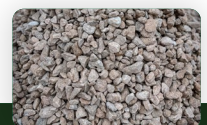
and many more



Wood chips



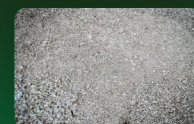
Topsoil



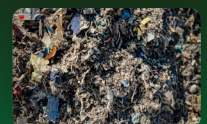
Gravel



Sand



Grit / chippings



Substitute fuels

Option 1 (Standard)

With attachement ring.



Technical Description

✓ Conveyor belt fine fraction

Belt width: 600 mm
Discharge side: Direction of travel left
Discharge height: 2,000 mm
Mechanisch Klappbar

✓ Transport dimensions

Length: 9,200 mm
Width: 2,450 mm
Height: 3,600 mm

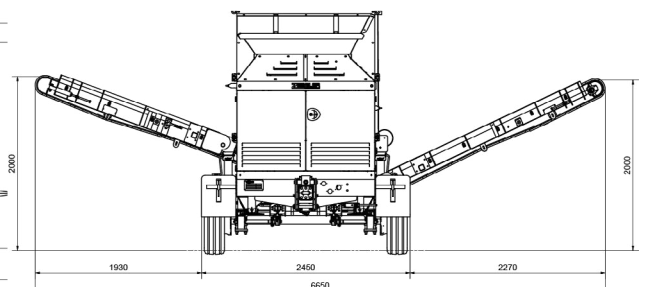
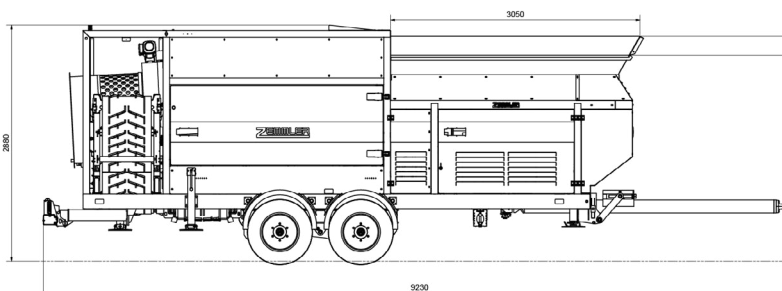
✓ Conveyor belt middle fraction

Belt width: 600 mm
Discharge side: Direction of travel right
Discharge height: 2,000 mm
Mechanically foldable

✓ Working dimensions

Length: 9,200 mm
Width: 6,650 mm
Height: 2,880 mm

✓ 3. Fraction via attachement ring



Option 2

With coarse fraction belt.



Technical Description

✓ Conveyor belt fine fraction

Belt width: 600 mm
Discharge side: Direction of travel left
Discharge height: 2,000 mm
Mechanically foldable

✓ Conveyor belt middle fraction

Gurtbreite: 600 mm
Discharge side: Direction of travel right
Discharge height: 2,000 mm
Mechanically foldable

✓ Conveyor belt coarse fraction

Belt width: 800 mm
Discharge side: back
Discharge height: 1,450 mm - 1,802 mm
Inclination: 10-20°
Mechanically foldable

✓ Transport dimensions

Length: 9,300 mm
Width: 2,450 mm
Height: 3,600 mm

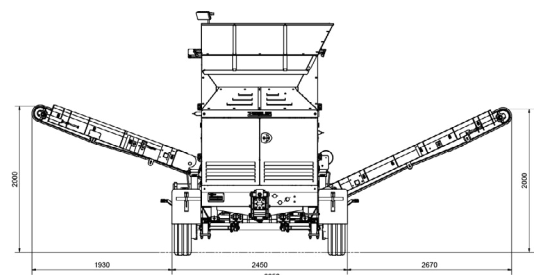
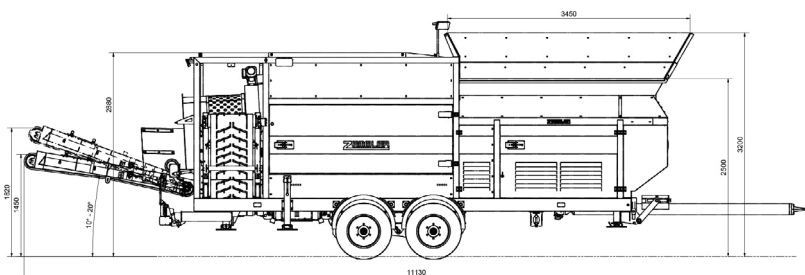
✓ Working dimensions

Length: 11,130 mm
Width: 6,650 mm
Height: 2,880 mm

✓ Additional load compensation (500 kg) is required

Unless a diesel generator is installed

✓ Hopper attachment recommended



Option 3

Extended fine and middle fraction belt.

With hydraulic unit and attachment ring.



Technical Description

✓ Conveyor belt fine fraction

Belt width: 600 mm
Discharge side: Direction of travel left
Discharge height: 2,780 mm
Hydraulically foldable

✓ Transport dimensions

Length: 9,230 mm
Width: 2,450 mm
Height: 3,650 mm

✓ Conveyor belt middle fraction

Belt width: 600 mm
Discharge side: Direction of travel right
Discharge height: 2,650 mm
Hydraulically foldable

✓ Working dimensions

Length: 9,230 mm
Width: 10,100 mm
Height: 3,325 mm

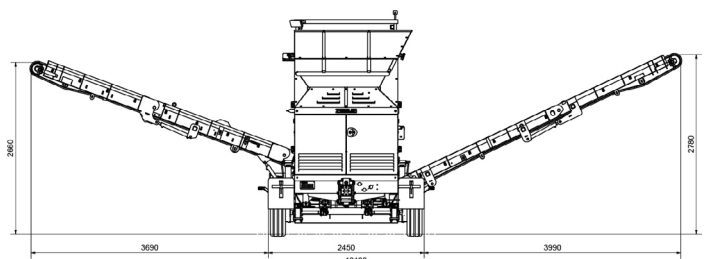
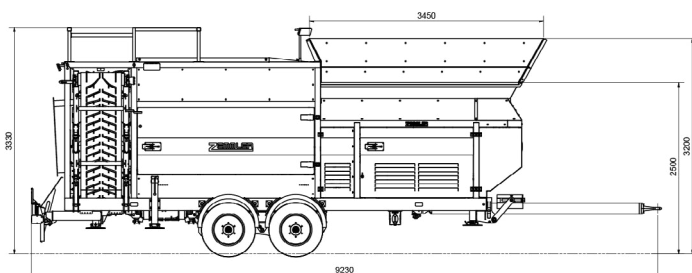
✓ 3. Fraction via attachment ring

✓ Additional load compensation (500 kg) is required

Unless a diesel generator is installed

✓ Hopper attachment recommended

✓ Additional hydraulic unit required for folding the straps



Option 4

Extended fine and medium fraction belt.

With hydraulic unit and coarse fraction belt.



Technical Description

✓ Conveyor belt fine fraction

Belt width: 600 mm

Discharge side: Direction of travel left

Discharge height: 2,780 mm

Hydraulically foldable

✓ Conveyor belt middle fraction

Belt width: 600 mm

Discharge side: Direction of travel right

Discharge height: 2,650 mm

Hydraulically foldable

✓ Conveyor belt coarse fraction

Belt width: 800 mm

Discharge side: back

Discharge height: 1,450 mm - 1,802 mm

Inclination: 10-20°

Hydraulically foldable

✓ Transport dimensions

Length: 9,300 mm

Width: 2,450 mm

Height: 3,650 mm

✓ Working dimensions

Length: 11,150 mm

Width: 10,100 mm

Height: 3,325 mm

✓ Additional load compensation 1,000 kg) is required

Unless a diesel generator is installed

✓ Additional hydraulic unit required for folding the straps

✓ Hopper attachment recommended

