

MULTI SCREEN®

MS 16 Pro



March, 23rd 2026



up to 30 m³/h

screening capacity



3,5 t
Maximum weight



Double trommel
technology



Interchangeable
wire screen



Full mobility
at 80 km/h



Tested
safety system



Electrical drive
optional external
power generator

With sensors & electronic control

for maximum safety & optimal operation

✓ simplified operation

✓ modern design

✓ improved safety

✓ easier to repair and maintain

Trommel length
1,790 / 2,680 mm

Hopper
Volume 1.85 m³
Loading width 2,510 mm

Weight
max. 3,500 kg

Towing device
Tow head,
towing eye Ø 40 / 50 mm

Trommel diameter
1,000 / 1,300 mm

Total screening area
approx. 11 m²

Drive
electric (16 A), optional
power generator

Transport measurements
(LxWxH)
6,200 x 2,100 x 3,200 mm



Nobelstr. 11
03238 Massen-Niederlausitz

+49 3531 7906-0
info@zemmler.de

www.zemmler.de/en



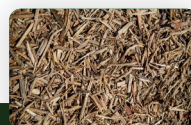
Technical Description

- ✓ **Base frame**
 - Longitudinal beam:** height approx. 160 mm
 - Chassis:** 2 x 1.8 t air suspension
 - Tires:** 4 x 185 R 14 C
 - Rim:** 4 x 5 ½ J
 - Brake:** trommel break, overrunbraked
- ✓ **Hopper**
 - Volume:** approx. 1.85 m³
 - Loading height:** 2,200 mm
 - Loading width:** 2,510 mm
- ✓ **Feeding belt**
 - Belt width:** 800 mm
 - Belt length:** approx. 2,500 mm
 - Belt type:** plain belt (ribbed belt: optional)
 - Speed:** adjustable
- ✓ **Double trommel**
 - Inner screening surface:** 5.2 m²
 - Outer screening surface:** 6.5 m²
 - Trommel diameter:** 1,000 mm (inner)
 - Trommel diameter:** 1,300 mm (outer)
 - Length:** 1,790 / 2,680 mm
 - Rotational speed:** adjustable
 - Trommel drive:** directly via pulley and belt, maintenance-free (no lubrication, no need to replace chain or sprocket)
- ✓ **Mesh sizes**
 - Inner:** 75 x 170 mm (standard)
 - Outer:** optional - exchangeable wire screens 2 - 80 mm
 - Screen change function by means of remote control
- ✓ **Cleaning brush**
 - Diameter:** 250 mm
- ✓ **Conveyor belt fine fraction**
 - Belt width:** 1,000 mm, mechanic foldable
 - Discharge side:** Direction of travel left
 - Discharge height:** 1,700 mm
- ✓ **Conveyor belt middle / coarse fraction**
 - Belt width:** 600 mm, mechanic foldable
 - Discharge side:** Direction of travel right
 - Discharge height:** 1,700 mm
- ✓ **3 fractions**
 - Fine fraction:** 2 - 80 mm, on demand
 - Middle fraction:** 2 to 80 mm or Standard 75 x 170 mm
 - Coarse fraction:** Extension for 3rd fraction depending on the mesh size of the middle fraction, standard > 170 mm (the use of the attachment ring is recommended, it is mandatory for particle sizes greater than 170 mm)
- ✓ **Power**
 - Electric drive,** 16A, CEE-Stecker connected load approx. 7.05 kW / 8.8 kVA (standard)
 - optional** petrol-power generator or diesel-power generator (not included in the basic price)
- ✓ **Hitch**
 - Height adjustable** up to 1,050 mm
 - and changeable between:**
 - trailer hitch ball Ø 50 mm according to ISO 24347 (standard)
 - drawbar eye Ø 40 mm or Ø 50 mm according to ISO 8755 (subject to surcharge)
- ✓ **Transport dimensions**
 - Length:** 6,200 - 6,500 mm
 - Width:** 2,100 mm
 - Height:** 3,200 mm
- ✓ **Working dimensions**
 - Length:** 6,200 - 6,500 mm
 - Width:** 6,000 mm
 - Height:** 2,240 mm
- ✓ **Screening capacity**
 - 5 - 30 m³/h,** depending on application, mesh size and feeding
- ✓ **Weight**
 - Max. 3,500 kg** (standard empty weight approx. 3,000 kg)
- ✓ **Colour / Coatings**
 - Polyurethane one-coat topcoat
 - Engine cover and side covers:** RAL 6001 green
 - Hopper, chassis, screening trommel:** RAL 7022 grey
- ✓ **Telemetry**

Processable materials

Coal
Excavated soil
Waste
Clinker
Stones
Rubbish
Glass
Plaster
Building rubble
Green waste
Wood
Compost
Shredded wood waste

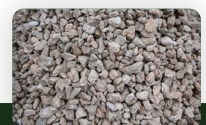
and many more



Wood chips



Topsoil



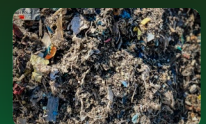
Gravel



Sand



Grit / chippings



Substitute fuels

Dimensions Standard Equipped

MULTI SCREEN® MS 16 Pro

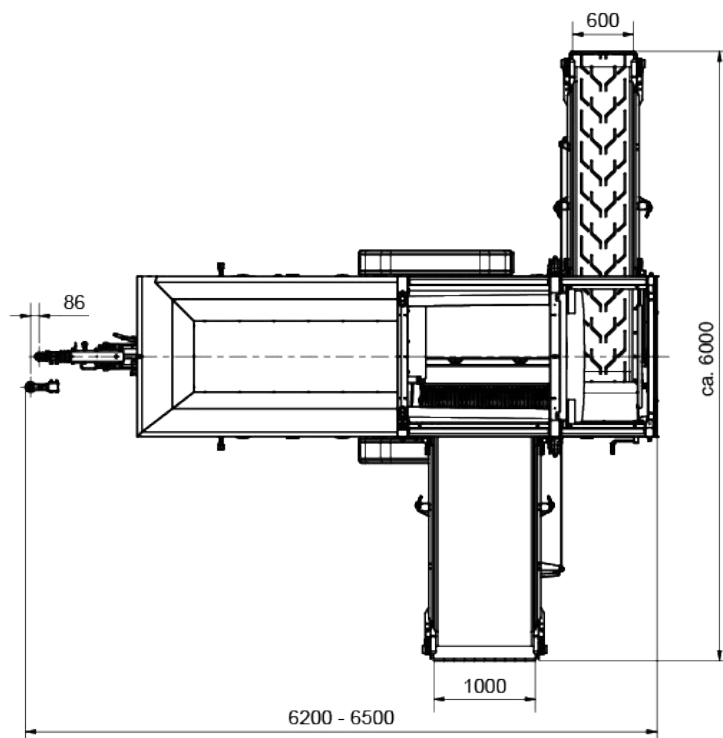
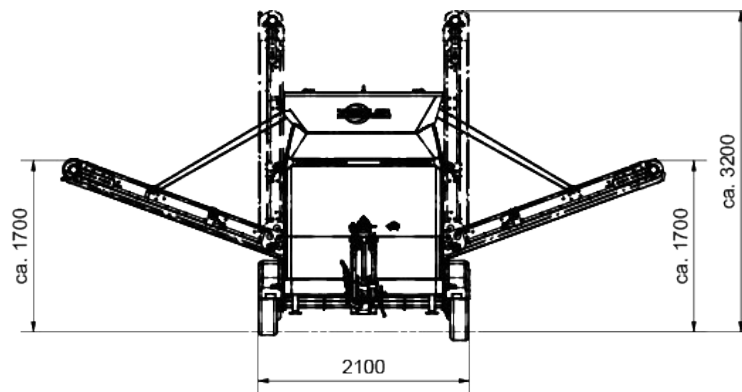
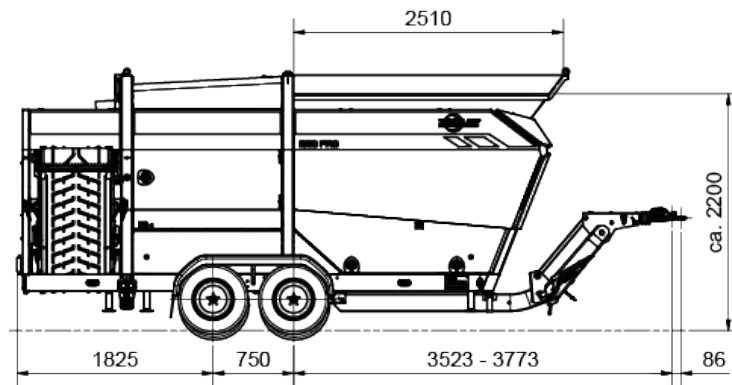


Illustration may contain extra charge options. All details are subject to technical modifications and future developments. Further distribution and any kind of publication is permitted only with written approval of the Zemmler Siebanlagen GmbH.